

BUSINESS INDICATORS

AUSTRALIAN
CAPITAL
TERRITORY

EMBARGO: 11:30AM (CANBERRA TIME) MON 29 JAN 2001

CONTENTS

	page
Notes	2
Summary of findings	3
Selected business indicators	6
FEATURE ARTICLE	
Child Care in the ACT, June 1999	7
TABLES	
1 Business indicators	10
2 ACT in relation to the rest of Australia	13
3 ACT in relation to the rest of Australia—percentage changes	14
INFORMATION	
Index of Feature Articles published in ACT Business Indicators	15

- For further information about these and related statistics, contact Nives Marelic on Canberra 02 6207 0315, or the National Information Service on 1300 135 070.

NOTES

FORTHCOMING ISSUES

<i>ISSUE</i>	<i>RELEASE DATE</i>
February 2001	23 February 2001
March 2001	23 March 2001
April 2001	20 April 2001
May 2001	18 May 2001
June 2001	22 June 2001

DATA CHANGES

Consumer Price Index This issue contains the 14th Australian Consumer Price Series which incorporates an updated commodity classification and weighting patterns. Minor changes to the composition of some groups have been made. For further details of changes resulting from the introduction of the 14th series Consumer Price Index (CPI), refer to *Information Paper: Introduction of the 14th Series Australian Consumer Price Index* (Cat. no. 6456.0) which was released 29 September 2000.

THE NEW TAX SYSTEM (TNTS)

ABS statistical series are being impacted to varying degrees as a result of The New Tax System, introduced in Australia from 1 July 2000. TNTS includes the removal of Wholesale Sales Tax on most items and the introduction of a Goods and Services Tax (GST). For full effect of those changes, refer to source publications as annotated at the end of the tables in this publication.

Consumer Price Index As CPI measures final transaction prices inclusive of indirect taxes, the introduction of The New Tax System (TNTS) had a direct impact on the CPI. The September series in particular has been affected by the introduction of the goods and services tax and the removal of wholesale and some state and territory taxes. For further information see *Information Paper: Price Indexes and The New Tax System* (Cat. no. 6425.0).

SYMBOLS AND OTHER USAGES

ACT	Australian Capital Territory
n.a.	not available
no.	number
n.p.	not available for publication
p	preliminary
. .	not applicable
*	Represents data with a standard error of greater than 25%. Caution should be exercised when using this data.
—	nil or rounded to zero

Peter Damcevski
Acting Regional Director, Australian Capital Territory

SUMMARY OF FINDINGS

UPDATED SERIES

Series updated since the December 2000 issue are: population, labour force, housing finance, industrial disputes, building approvals, building commencements, engineering construction, new motor vehicle registrations, retail turnover, job vacancies, tourist accommodation, private new capital expenditure and state accounts. The feature article this month, on pages 7–9, is Child Care in the ACT, June 1999.

Population

During the June quarter 2000, the ACT population increased by 83 persons to 310,839 persons. During the same period the national population grew to 19,157,037 persons.

Interstate migration resulted in a loss of 569 persons from the ACT, during the June quarter 2000. Overseas migration resulted in a gain of 19 persons to the ACT. The net result of this was a loss of 550 persons, which compares with a loss of 251 persons in the June quarter 1999.

Natural increase continued to provide the main source of population growth in the ACT and for the year ending June 2000 the natural increase was 633 people.

Engineering construction activity

The value of construction work done by the public sector in the ACT during the September quarter 2000 decreased by 28.2% or \$8.7 million over the previous quarter, and decreased \$6.9 million or 23.7% from the September quarter 1999. Nationally, the value of public sector work done decreased by 11.9% from the previous quarter, and increased 6.4% from the September quarter 1999.

The value of engineering construction work done by the private sector in the ACT during the September quarter 2000 decreased by \$15.1 million to \$33.2 million over the previous quarter but increased by \$8.2 million from the September quarter 1999. Nationally, the value of private sector engineering construction work done decreased by \$177.8 million over the previous quarter, and decreased by \$271.1 million from the September quarter 1999.

Tourist accommodation

The room occupancy rate for ACT hotels, motels, services apartments and guest houses in the September quarter 2000 was 56.8%, down 7.9 percentage points from the previous quarter, and down 0.8 percentage points from the September quarter 1999. Nationally, in the September quarter, the room occupancy rate rose by 1.3 percentage points to 58.4% but was down 2.4 percentage points from the September quarter 1999.

Private new capital expenditure

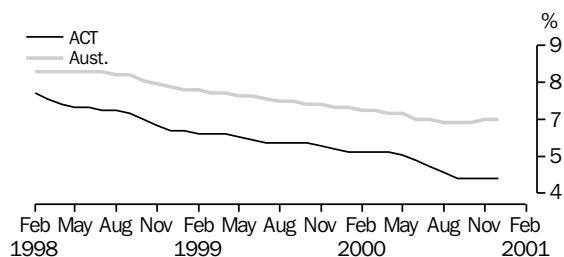
The trend private new capital expenditure in the ACT in the September quarter 2000 was \$89 million, down 9.2% over the previous quarter, but an increase of 18.7% over the September quarter 1999. Private new capital expenditure on buildings and structures increased by 11.5% since the previous quarter and increased 52.6% over the previous year. Equipment, plant and machinery was down 16.7% over the previous quarter but increased 7.1% over the September quarter 1999. Nationally, the trend private new capital expenditure was up 0.6% over the previous quarter and up 0.9% over the September quarter 1999.

Industrial disputes	In the 12 months to September 2000 in the ACT there were 8 working days lost per thousand employees in the ACT compared to 83 days nationally. This reflects a decrease in the number of working days lost of 76% for the ACT and an increase of 15% nationally since the previous year.
New Motor Vehicle Registrations	The trend estimate for ACT new motor vehicle registrations in November 2000 was 1,182, up 0.9% from the previous month, and up 7.6% from November 1999. Nationally, the trend for total new motor vehicle registrations in November 2000 decreased by 0.7% to 66,276 from October 2000, and was up 7.6% compared with November 1999.
Retail turnover	The retail turnover in the ACT for November 2000 was \$272.6 million, an increase of 5.1% over the previous month and up 15.7% compared to November 1999. Nationally, retail turnover was up 3.5% over the previous month and was up 4.6% compared with the previous year.
State accounts	In the ACT, the trend State final demand (chain volume measures) grew by 0.1% to \$4,927 million in the September quarter 2000, compared to \$4,923 million in June quarter 2000, and was up 10.3 % compared to September 1999. Nationally, trend Domestic final demand (chain volume measures) grew by 0.9% compared to the September quarter 2000, and was up 4.4% compared to the September quarter 1999.
Building approvals	<p>The trend number of dwelling units approved in the ACT increased by 1.9% to 163 dwelling units in November 2000. Nationally, the trend number of dwelling units approved in November 2000 increased by 0.4% to 9,130 dwelling units since the previous quarter.</p> <p>The value of non-residential building approvals in the ACT in November 2000 was \$4.6 million, down 65.2% over the previous month and an down 91.0% from November 1999.</p> <p>Nationally, the value of non-residential building approvals for November 2000 was \$961.5 million, down 6.9 from the previous month, and down of 5.6 from November 1999.</p>
Building commencements	The value of new houses commenced in the ACT in the September quarter 2000 was \$36.3 million, down 39.5% from the previous quarter and down 5.7% from the September quarter 1999. Nationally, the value of new houses commenced in the September quarter 2000 was \$2,705.2 million, down 33.1% from the previous quarter and down 25.4% from the previous year.

Labour force	At December 2000, the trend unemployment rate for the ACT remained constant from November 2000 at 4.5% but was down 1 percentage point since December 1999. The number of persons unemployed rose 1.3% to 8,100 compared to the previous month, and decreased 15.6% compared with December 1999. ACT trend employment in December 2000 also remained constant at 171,200 persons and increased 3.8% over the last 12 months. The trend ACT participation rate for December 2000 rose by 0.1 percentage points and the national rate decreased by 0.2 percentage points. Nationally, trend employment decreased by 0.1% to 9,083,400 persons in December 2000, while the trend unemployment increased by 0.8% to 632,500 persons. The national trend unemployment rate remained steady at 6.5%.
Job vacancies	There were 3,500 job vacancies in the ACT for the November quarter 2000 which is a 16.7% increase from the previous quarter, but was down 7.9% from the corresponding quarter of the previous year. Nationally, job vacancies for November quarter 2000 decreased by 7.4% since the August quarter, and increased 14.5% over the November quarter 1999.
Housing finance	The trend number of dwelling units financed (including re-financing) in the ACT in November 2000 was 702, an increase of 0.1% over the previous month. The trend estimate for the value of commitments in the ACT in November 2000 decreased by 2.4% to \$83 million compared with the previous month. Nationally, the trend number of dwelling units financed (including refinancing) was 42,767, down 0.1% compared with the previous month, while the trend estimate for the value of commitments also decreased by 0.7% to \$5,335 million compared with the previous month.

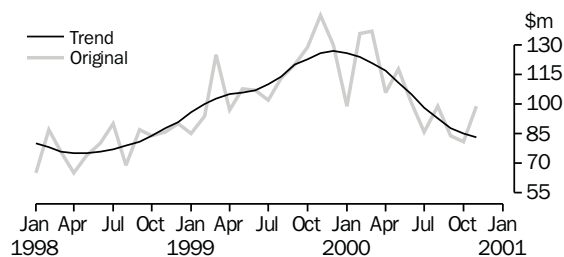
SELECTED BUSINESS INDICATORS

UNEMPLOYMENT RATE: Trend



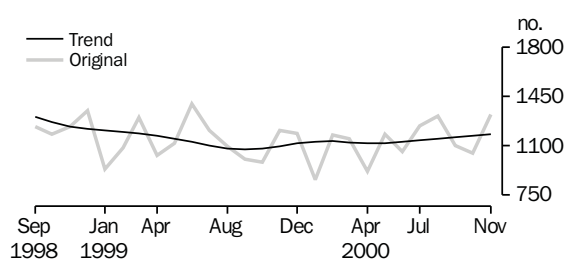
Source: Labour Force, Australia (Cat. no. 6202.0).

HOUSING FINANCE



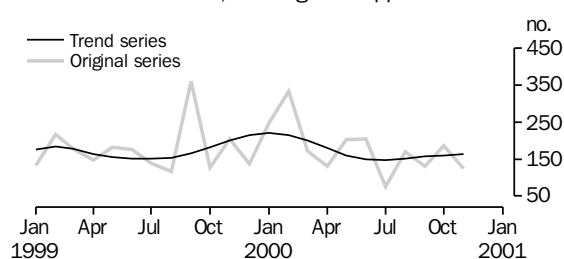
Source: Housing Finance, Australia (Cat. no. 5609.0).

NEW MOTOR VEHICLE REGISTRATIONS



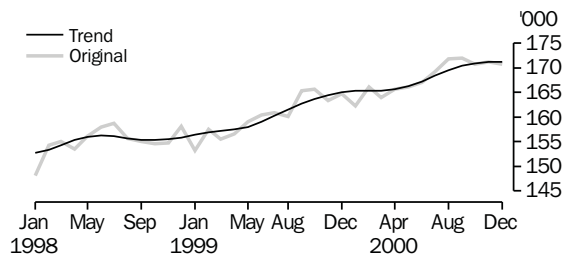
Source: New Motor Vehicle Registrations, Australia (Cat. no. 9301.0).

BUILDING APPROVALS, Dwelling units approved



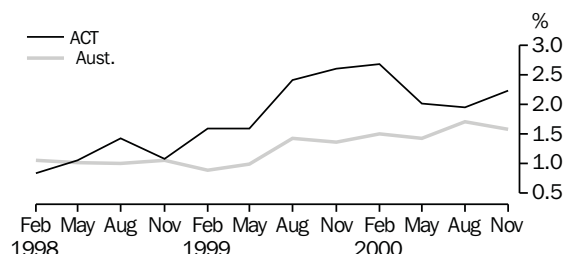
Source: Building Approvals, Australia (Cat. no. 8731.0).

EMPLOYED PERSONS



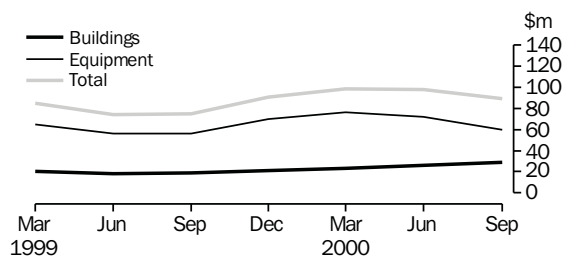
Source: Labour Force, Australia (Cat. no. 6202.0).

JOB VACANCY RATES



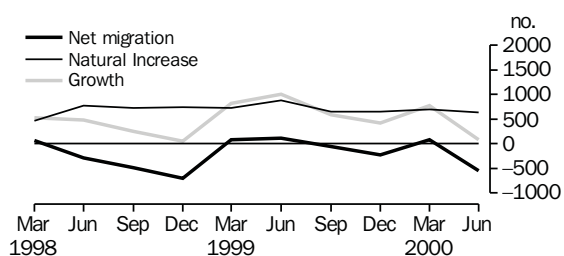
Source: Job Vacancies, Australia (Cat. no. 6354.0).

PRIVATE NEW CAPITAL EXPENDITURE: Trend



Source: Private New Capital Expenditure (Cat. no. 5646.0).

COMPONENTS OF POPULATION GROWTH



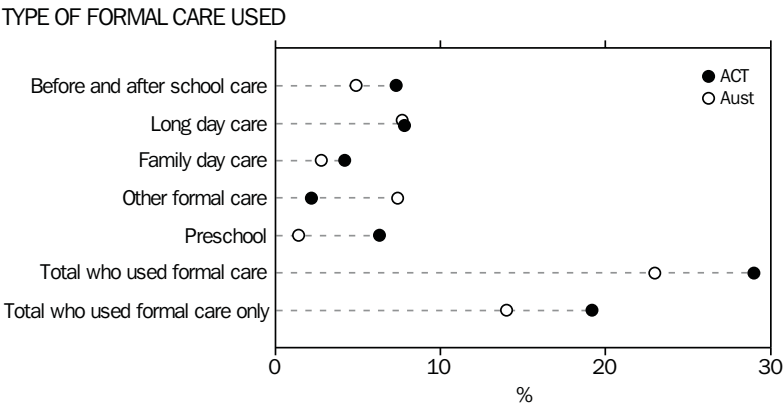
Source: Australian Demographic Statistics (Cat. no. 3101.0).

Child care refers to arrangements (other than parental care) made for the care of children under 12 years of age. Formal care is regulated care which takes place away from the child's home and includes attendance at preschool, a child care centre, family day care and occasional care. Informal care is care which is non-regulated and can take place in the child's home or elsewhere. It includes care by family members, friends, neighbours and paid babysitters. Parents often use a combination of formal and informal arrangements to provide for children's care needs. Further information is available from *Child Care, Australian Capital Territory, June 1999*, (Cat. no. 4402.8.40.000) released on 1st September 2000.

Types of care There were 32,500 children in the ACT who received both formal and informal child care. Of those receiving formal child care, the two types most commonly used were long day care (27%), and before and after school care program (25%); followed by preschool (22%), family day care (15%) and occasional care (12%). This compares to 33% for long day care and 32% for preschool as the most commonly used types of formal care at the national level.

Child care usage varied with age of children. The use of formal care by very young children was low (5% of children under one year). This increased from age one (7%) up to ages three and four (23%) as children started to attend preschool. From age five, when children have started school, the proportion of children using formal care dropped sharply, with 7% of five year old children and 6% of 9–11 year old children in formal care.

The ACT had the second highest proportion (29%) of children who used formal care among all States and Territories, with Northern Territory at 30%. Nationally, 23% of children used formal care.



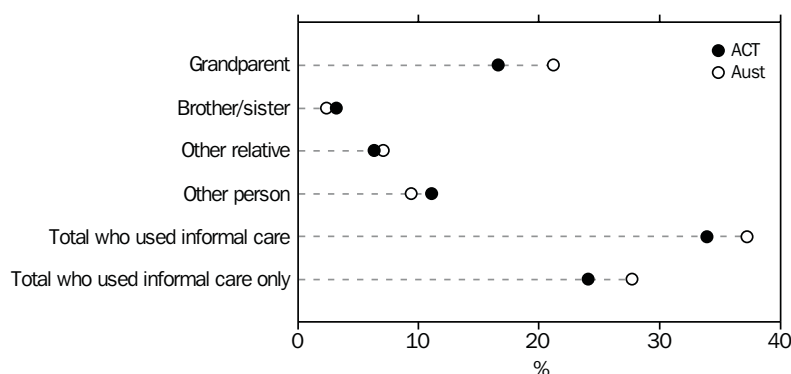
Source: *Child Care, Australia, June 1999* (Cat. no. 4402.0).

Among children receiving informal care in the ACT, 49% were looked after by grandparent(s), 33% by other people (unrelated) and 10% by brother/sister. In comparison, national figures showed that 57% were looked after by grandparents, 25% by other people and 6% by brother/sister.

The use of informal care decreased after children reached the age of five. Overall, 39% of children under five years used informal care compared to 30% of children aged 5–11 years.

The ACT had the second lowest proportion (34%) of children who used informal care among all States and Territories. This compares to 37% of children who used informal care at the national level.

TYPE OF INFORMAL CARE USED



Source: *Child Care, Australia, June 1999* (Cat. no. 4402.0).

Hours and cost of care Of the children who used formal care in the ACT, 15% used it for less than five hours per week, 69% used it for 5–29 hours and 9% for 35 hours or more per week. In contrast, of the children who used informal care, 35% used it for less than five hours per week, 52% for 5–29 hours and 10% for 35 hours or more.

Of the children who received informal care, 84% received it at no cost. These children who received formal care, 62% spent less than \$40 per week and 19% spent \$100 or more.

Generally, as family income increased, the proportion of children who used child care increased, reflecting the higher proportion of families with both parents employed. Of children in families with a weekly income less than \$400, 46% received some type of child care compared to 82% of children in families with a weekly income \$2,000 or more.

For the ACT, 52% of children were in families with both parents or the lone parent employed either full-time or part-time. Of this group, 69% of children were in care.

The information in this article was based on responses from people included in the June 1999 Child Care Survey conducted throughout Australia. The major aim of the survey was to collect data on the supply of, and demand for, child care for children under 12 years of age. Information was also collected on the use of the Childcare Rebate and the working arrangements of parents with children under 12.

Indicator	Unit	ACT			Aust.		
		% change from			% change from		
		Latest figure	Previous period	Same period previous year	Latest figure	Previous period	Same period previous year
POPULATION, VITALS AND LABOUR							
POPULATION, Jun qtr 00	'000	310.8	—	0.5	19 157.0	0.3	1.2
Natural increase	no.	633	−9.6	−12.2	33 179	11.8	9.5
Net migration	no.	−550	−833.3	119.1	18 430	−22.2	6.4
Total growth	no.	83	−89.3	−82.3	51 609	−3.3	8.4
LABOUR FORCE, Dec 00							
Original series							
Employed	'000	170.8	−0.2	3.7	9 224.5	1.7	2.0
Unemployed	'000	7.8	−3.7	−13.3	637.6	6.1	−4.4
Unemployment rate	%	4.4	−0.1	−0.8	6.5	0.3	−0.4
Participation rate	%	73.4	−0.3	0.5	64.4	1.2	0.1
Long-term unemployed, Nov 00	no.	2 097	10.8	−26.4	153 641	−4.4	−18.5
Long-term unemployed as percentage of total unemployed, Nov 00	%	26.0	0.6	−3.2	25.6	−1.8	−5.3
Trend series, Dec 00							
Employed	'000	171.2	—	3.8	9 083.4	−0.1	2.0
Unemployed	'000	8.1	1.3	−15.6	632.5	0.8	−4.3
Unemployment rate	%	4.5	—	−1.0	6.5	—	−0.4
Participation rate	%	73.7	0.1	0.5	63.5	−0.1	0.2
WAGE AND SALARY EARNERS							
Number employed—Trend series, Jun qtr 00							
Private sector	'000	85.5	2.4	2.9	5 786.9	1.0	1.1
Public sector	'000	69.3	0.6	3.7	1 461.7	−0.3	0.8
Total	'000	154.8	1.6	3.3	7 248.6	0.7	1.0
Gross earnings—Original series, Jun qtr 00							
Private sector	\$m	606.6	0.4	−11.8	48 010.7	3.8	3.9
Public sector	\$m	824.6	−10.5	5.4	15 059.5	−2.7	2.4
Total	\$m	1 431.2	−6.2	−2.6	63 070.2	2.1	3.6
JOB VACANCIES, Nov qtr 00	'000	3.5	16.7	−7.9	118.2	−7.4	14.5
INDUSTRIAL DISPUTES IN PROGRESS, Sep 00							
Working days lost	'000	0.0	−100.0	−100.0	31.0	−5.8	−52.2
Days lost per '000 employees (year ended ref. period)	no.	8.0	0.0	−75.8	83.0	−4.6	15.3
HOUSING AND BUILDING ACTIVITY							
HOUSING FINANCE, Nov 00							
Secured commitments to individuals for							
Original series							
Construction of dwellings	\$m	6.0	−25.0	−60.0	540.0	3.6	−49.5
Purchase of new dwellings	\$m	5.0	25.0	—	207.0	13.7	−19.5
Purchase of established dwellings	\$m	89.0	29.0	−28.8	5 168.0	15.1	−11.8
Re-financing	\$m	14.0	55.6	−22.2	1 165.0	9.6	4.9
Total housing commitments	\$m	99.0	22.2	−31.7	5 915.0	13.9	−17.7
Seasonally adjusted series							
Total housing commitments	\$m	92.0	16.5	−29.2	5 428.0	4.7	−18.8
Trend series							
Total housing commitments	\$m	83.0	−2.4	−34.1	5 335.0	−0.7	−19.7
Dwelling units financed	no.	702	0.1	−29.7	42 767	−0.1	−11.5
PRICE INDEXES							
Established house price index, Sep qtr 00	no.	143.4	1.0	10.6	147.1	−0.1	7.5
BUILDING APPROVALS, Nov 00							
Original series							
Dwelling units	no.	125	−32.4	−39.0	10 798	13.4	−34.6
Value of new residential	\$m	17.8	−37.3	−24.9	1 454.7	17.9	−26.1
Value of residential alterations and additions	\$m	4.4	4.8	−21.4	261.8	−9.8	−12.8
Value of non-residential	\$m	4.6	−65.2	−91.0	961.5	−6.9	−5.6
Value of total building	\$m	26.9	−41.1	−66.5	2 678.0	4.7	−18.5
Trend series							
Dwelling units	no.	163	1.9	−18.9	9 130	0.4	−41.7

Indicator	Unit	ACT			Aust.		
		% change from			% change from		
		Latest figure	Previous period	Same period previous year	Latest figure	Previous period	Same period previous year
HOUSING AND BUILDING ACTIVITY continued							
BUILDING COMMENCEMENTS, Sep qtr 00							
New houses	no.	234	-44.7	-10.3	19 255	-35.8	-33.4
Value of houses commenced	\$m	36.3	-39.5	-5.7	2 705.2	-33.1	-25.4
Value of non-residential building commenced	\$m	26.4	-78.2	-19.8	2 637.9	-23.8	-11.2
Value of total commencements	\$m	87.6	-59.5	-30.4	7 356.5	-26.4	-21.4
ENGINEERING CONSTRUCTION, Sep qtr 00							
Private sector							
Value of work commenced	\$m	23.9	-53.5	56.2	2 263.7	-18.2	-18.0
Value of work done	\$m	33.2	-31.3	32.8	2 725.4	-6.1	-9.0
Value of work yet to be done	\$m	43.6	-22.3	69.0	4 969.2	-0.4	-5.7
Public sector							
Value of work done	\$m	22.2	-28.2	-23.7	1 678.1	-11.9	6.4
PRICES, WAGES AND CONSUMER SPENDING							
CONSUMER PRICE INDEX, Sep qtr 00(a)							
Food	no.	134.1	2.3	5.0	132.4	1.7	3.0
Housing(b)	no.	106.7	6.1	11.1	107.4	6.1	9.5
Transportation(b)	no.	138.6	1.6	5.3	135.6	2.6	6.9
All groups	no.	130.7	3.8	6.8	130.9	3.7	6.1
AVERAGE WEEKLY EARNINGS, Aug qtr 00							
Full-time adult ordinary time earnings							
Original series							
Males	\$	992.1	1.3	10.3	848.3	1.9	6.5
Females	\$	832.2	0.7	6.2	710.9	1.9	5.2
Persons	\$	917.3	0.6	7.7	798.1	2.0	6.2
Trend series							
Males	\$	987.5	0.7	8.7	846.8	1.4	5.8
Females	\$	832.7	0.8	4.8	710.2	1.5	5.0
Persons	\$	916.8	0.8	6.5	796.6	1.5	5.5
WAGE COST INDEX, Sep qtr 00(c)							
Public sector	no.	108.2	1.5	2.7	110.3	1.1	2.9
Private sector	no.	110.1	2.1	4.0	109.5	1.3	3.1
Total	no.	108.9	1.8	3.1	109.7	1.2	3.1
RETAIL TURNOVER, Nov 00							
Original series							
Food retailing	\$m	98.1	2.5	20.8	5 115.3	0.8	4.0
Department stores	\$m	27.9	10.3	0.4	1 207.6	15.0	0.0
Hospitality and services	\$m	44.6	3.5	28.5	2 293.4	-0.4	8.2
All other retailing	\$m	102.0	7.0	11.0	45 659.0	6.0	4.8
Total	\$m	272.6	5.1	15.7	13 182.2	3.5	4.6

(a) Base year: 1989-90 = 100.0.

(b) The 14th Series Australian Consumer Price Index was introduced September quarter 2000. Some changes include an updated commodity classification and weighting pattern and changes in composition of some groups. For more details of changes, refer to Information Paper: Introduction of the 14th Series Australian Consumer Price Index (Cat. no. 6456.0) released 29 September 2000.

(c) Base of each index is September quarter 1997 = 100.0.

Indicator	Unit	ACT			Aust.		
		% change from			% change from		
		Latest figure	Previous period	Same period previous year	Latest figure	Previous period	Same period previous year
TOURIST ACCOMMODATION, Sep qtr 00							
Original series							
Room nights occupied	'000	262.4	-11.5	-7.9	10 449.0	4.5	0.5
Room occupancy rate	%	56.8	-7.9	-0.8	58.4	1.3	-2.4
Guest nights	'000	443.5	-8.9	-8.0	18 589.0	7.0	-0.2
Guest arrivals	'000	201.8	-9.4	-11.1	7 979.0	1.7	-3.9
Takings from accommodation	\$'000	28 747.0	-4.5	1.8	1 302 158.0	25.3	20.8
NEW MOTOR VEHICLE REGISTRATIONS, Nov 00							
Original series	no.	1 325	26.2	9.4	68 395	5.1	3.8
Seasonally adjusted series	no.	1 213	7.3	4.8	65 195	-1.8	4.5
Trend series	no.	1 182	0.9	7.6	66 276	-0.7	7.6
STATE ACCOUNTS, Sep qtr 00							
Trend series (chain volume measure)(a)							
General government final consumption expenditure	\$m	2 575	0.9	13.8	29 602	0.5	6.9
Household final consumption expenditure	\$m	1 777	1.3	8.2	94 445	0.7	3.7
Private gross fixed capital formation	\$m	358	-7.0	6.9	30 665	-1.5	2.4
Public gross fixed capital formation	\$m	222	-4.7	-17.8	6 730	0.9	-3.7
State final demand	\$m	4 927	0.1	10.3	159 314	0.9	4.4
GROSS STATE PRODUCT (trend, chain volume measures), 1999-00							
	\$m	12 669	4.9	..	620 963	4.3	..
PRIVATE NEW CAPITAL EXPENDITURE, Sep qtr 00							
Original series (at current prices)							
Buildings and structures	\$m	31	29.2	82.4	2 665	-17.4	-15.0
Equipment, plant and machinery	\$m	50	-41.9	-10.7	7 306	-10.2	-2.8
Total	\$m	81	-26.4	12.5	9 971	-12.2	-6.4
Trend series (at current prices)							
Buildings and structures	\$m	29	11.5	52.6	3 012	3.1	5.1
Equipment, plant and machinery	\$m	60	-16.7	7.1	7 523	-0.3	-0.8
Total	\$m	89	-9.2	18.7	10 535	0.6	0.9
INTERNATIONAL MERCHANDISE TRADE, Sep qtr 00							
Imports	\$m	2	-33.3	0.0	30 406	5.3	16.9
Exports	\$m	5	-28.6	-44.4	28 500	6.9	30.2
BUSINESS EXPECTATIONS, TRADING PERFORMANCE, OPERATING INCOME							
Short term expected quarterly change, Mar qtr 01	%	4.1	-3.0
Long term expected annual change Dec qtr 01	%	4.3	1.5

(a) Quarterly state final demand details are released as a special data service (Cat. no. 5206.0.40.001).

(b) Reference year for chain volume measures is 1998-99.

Source: Australian Demographic Statistics (Cat. no. 3101.0); Australian National Accounts: Quarterly State Details (Cat. no. 5206.0.40.001); Average Weekly Earnings, States and Australia (Cat. no. 6302.0); Building Activity, Australia (Cat. no. 8752.0); Building Approvals, Australia (Cat. no. 8731.0); Consumer Price Index (Cat. no. 6401.0); Housing Finance, Australia (Cat. no. 5609.0); House Price Indexes (Cat. no. 6416.0); Industrial Disputes, Australia (Cat. no. 6321.0); Job Vacancies, Australia (Cat. no. 6354.0); Labour Force, Australia, Preliminary (Cat. no. 6202.0); New Motor Vehicle Registrations, Australia Preliminary (Cat. no. 9301.0); Private New Capital Expenditure, State Estimates (Cat. no. 5646.0); Retail Trade, Australia (Cat. no. 8501.0); Tourist Accommodation, Australia (Cat. no. 8635.0); Wage Cost Index, Australia (Cat. no. 6345.0).

Indicator	Unit	Latest period	NSW	Vic.	Qld	SA	WA	Tas.	NT	ACT	Aust.
POPULATION	'000	Jun qtr 00	6 463.5	4 765.9	3 566.4	1 497.6	1 883.9	470.4	195.5	310.8	19 157.0
LABOUR FORCE , trend series											
Employed persons	'000	Dec 00	3 025.8	2 295.5	1 685.0	674.9	936.8	202.4	93.2	171.2	9 083.4
Unemployment rate	%	Dec 00	5.8	6.1	7.9	7.4	6.2	8.9	6.3	4.5	6.5
WAGE AND SALARY EARNERS , trend series											
Private sector	'000	Jun qtr 00	1 944.5	1 553.5	1 025.7	416.6	589.0	115.4	56.7	85.5	5 786.9
Public sector	'000	Jun qtr 00	465.7	309.2	292.1	114.6	147.7	41.2	22.3	69.3	1 461.7
Total	'000	Jun qtr 00	2 410.2	1 862.7	1 317.8	531.2	736.7	156.6	79.0	154.8	7 248.6
STATE ACCOUNTS											
Gross state product (chain volume measures)(a)	\$m	1999-00	221 375	157 915	103 691	41 381	66 525	11 367	6 466	12 669	620 963
PRIVATE NEW CAPITAL EXPENDITURE											
Total (at current prices), trend series	\$m	Sep qtr 00	4 166	2 620	1 686	668	1 069	138	76	89	10 535
BUILDING APPROVALS											
Dwelling units approved, original series	no.	Nov 00	3 407	3 087	2 178	661	1 163	116	61	125	10 798
Dwelling units approved, trend series	no.	Nov 00	2 988	2 393	1 758	512	1 100	98	58	163	9 130
Value of non-residential building approved, original series	\$m	Nov 00	269.6	290.4	263.2	48.2	61.6	10.9	6.4	4.6	961.5
Value of all buildings approved, original series	\$m	Nov 00	855.1	826.7	568.3	126.6	223.7	28.8	22.1	26.9	2 678.0
ENGINEERING CONSTRUCTION , original series											
Value of engineering construction work done	\$m	Sep Qtr 00	1 534.6	773.4	1 247.8	252.1	457.3	40.9	42.0	55.3	4 403.4
AVERAGE WEEKLY EARNINGS , trend series											
Full-time adult ordinary time earnings	\$	Aug qtr 00	834.7	782.4	747.1	743.5	812.6	745.3	805.1	916.8	796.6
RETAIL TRADE TURNOVER , original series	\$m	Nov 00	4 520.6	3 163.0	2 476.6	1 000.2	1 319.4	294.1	135.6	272.6	13 182.2
TOURIST ACCOMMODATION , original series											
Room nights occupied	'000	Sep qtr 00	3 543.3	1 608.7	2 982.4	516.0	945.5	191.0	399.3	262.4	10 449.0
Room occupancy rate	%	Sep qtr 00	59.7	56.2	61.8	53.5	53.9	37.8	69.4	56.8	58.4
NEW MOTOR VEHICLE REGISTRATIONS , trend series	no.	Nov 00	22 462	16 953	13 141	4 227	6 316	1 361	634	1 182	66 276
	Unit	Latest period	Syd.	Melb.	Bris.	Adel.	Perth	Hob.	Dar.	Canb.	Aust.
CONSUMER PRICE INDEX(b)											
Food	no.	Sep qtr 00	133.4	131.6	131.4	133.8	132.9	130.9	131.1	134.1	132.4
Housing	no.	Sep qtr 00	115.8	97.8	112.0	103.9	101.3	105.5	123.9	106.7	107.4
Transportation	no.	Sep qtr 00	136.7	134.5	134.6	136.8	136.0	133.3	130.6	138.6	135.6
All Groups	no.	Sep qtr 00	131.6	130.4	131.3	132.3	128.6	131.3	130.0	130.7	130.9
AVERAGE RETAIL PRICES											
Milk, carton, supermarket sales	1 litre	Sep qtr 00	133	147	142	137	144	129	149	122	..
Bread, white loaf, sliced, supermarket sales	650 g(c)	Sep qtr 00	236	246	217	219	221	239	224	233	..
Beef, rump steak	1 kg	Sep qtr 00	1 223	1 113	1 104	1 202	1 143	1 080	1 227	1 235	..
Chicken, frozen	1 kg	Sep qtr 00	369	353	354	339	360	325	414	368	..
Potatoes	1 kg	Sep qtr 00	109	135	112	75	135	103	135	121	..
Coffee, instant (jar)	150 g	Sep qtr 00	624	623	604	551	570	655	543	636	..
Scotch nip, public bar	30 ml	Sep qtr 00	371	368	311	385	411	296	370	309	..
Private motoring petrol											
Leaded	1 litre	Sep qtr 00	95.9	94.9	87.5	95.4	97.0	102.2	103.8	98.6	..
Unleaded	1 litre	Sep qtr 00	93.0	92.0	84.6	92.6	94.0	99.9	100.9	95.6	..

(a) Experimental series. Users are cautioned these estimates are derived indirectly by calculating a deflator from the expenditure components of the state series concerned. Therefore, in general, the sum of the state estimates does not equal the estimates for Australia. Reference year for chain volume measures is 1998-99.

(b) Base year: 1989-90 = 100.0. The 14th Series Australian Consumer Price Index was introduced September quarter 2000. Some changes include an updated commodity classification and weighting pattern and changes in composition of some groups. For more details of changes, refer to Information Paper: Introduction of the 14th Series Australian Consumer Price Index (Cat. no. 6456.0) released 29 September 2000.

(c) 680g in Hobart and Darwin.

Indicator	Unit	Latest period	NSW	Vic.	Qld	SA	WA	Tas.	NT	ACT	Aust.
POPULATION	'000	Jun qtr 00	0.3	0.3	11.4	-3.8	0.3	-0.0	0.5	—	0.3
LABOUR FORCE , trend series											
Employed persons	'000	Dec 00	-0.2	—	11.4	-3.8	0.2	0.4	0.3	—	-0.1
Unemployment rate	%	Dec 00	1.8	—	11.4	-3.8	—	-2.2	6.8	—	—
WAGE AND SALARY EARNERS , trend series											
Private sector	'000	Jun qtr 00	2.2	0.4	11.4	-3.8	0.5	-1.1	3.7	2.4	1.0
Pubic sector	'000	Jun qtr 00	-0.7	0.5	11.4	-3.8	-1.3	0.7	0.5	0.6	-0.3
Total	'000	Jun qtr 00	1.6	0.4	11.4	-3.8	0.1	-0.6	2.7	1.6	0.7
STATE ACCOUNTS											
Gross state product (chain volume measures)(a)	\$m	1999-00	3.7	4.6	11.4	-3.8	4.6	1.1	-0.0	4.9	4.3
PRIVATE NEW CAPITAL EXPENDITURE											
Total (at current prices), trend series	\$m	Sep qtr 00	5.3	-1.4	11.4	-3.8	-7.8	7.8	-29.0	-9.2	0.6
BUILDING APPROVALS											
Dwelling units approved, original series	no.	Nov 00	-1.5	47.1	11.4	-3.8	-4.1	-4.1	-12.9	-32.4	13.4
Dwelling units approved, trend series	no.	Nov 00	3.9	-2.2	11.4	-3.8	-4.3	-2.0	-17.1	1.9	0.4
Value of non-residential building approved, original series	\$m	Nov 00	-29.2	28.9	11.4	-3.8	-42.7	70.3	-64.0	-65.2	-6.9
Value of all buildings approved, original series	\$m	Nov 00	-8.9	32.4	11.4	-3.8	-17.4	-6.2	15.7	-41.1	4.7
ENGINEERING CONSTRUCTION , original series											
Value of engineering construction work done	\$m	Sep Qtr 00	-14.6	-10.1	11.4	-3.8	-31.2	-43.7	-20.6	43.2	16.7
AVERAGE WEEKLY EARNINGS , trend series											
Full-time adult ordinary time earnings	\$	Aug qtr 00	1.2	1.7	11.4	-3.8	1.4	1.4	1.1	0.8	1.5
RETAIL TRADE TURNOVER , original series	\$m	Nov 00	1.5	6.4	11.4	-3.8	3.8	7.1	-2.2	5.1	3.5
TOURIST ACCOMMODATION , original series											
Room nights occupied	'000	Sep qtr 00	6.6	-1.2	11.4	-3.8	1.2	-23.1	12.6	-11.5	4.5
Room occupancy rate	%	Sep qtr 00	2.8	-1.6	11.4	-3.8	-0.9	-23.9	10.2	-7.9	1.3
NEW MOTOR VEHICLE REGISTRATIONS , trend series	no.	Nov 00	0.0	-1.8	11.4	-3.8	-1.5	3.1	-1.2	0.9	-0.7
	Unit	Latest period	Syd.	Melb.	Bris.	Adel.	Perth	Hob.	Dar.	Canb.	Aust.
CONSUMER PRICE INDEX(b)											
Food	no.	Sep qtr 00	2.1	1.2	11.4	-3.8	2.5	1.4	0.8	2.3	1.7
Housing	no.	Sep qtr 00	5.7	6.7	11.4	-3.8	6.2	6.4	4.8	6.1	6.1
Transportation	no.	Sep qtr 00	2.4	2.5	11.4	-3.8	3.3	3.1	1.0	1.6	2.6
All Groups	no.	Sep qtr 00	3.6	3.8	11.4	-3.8	3.7	3.8	3.4	3.8	3.7
AVERAGE RETAIL PRICES (cents)											
Milk, carton, supermarket sales	1 litre	Sep qtr 00	-1.5	-2.0	11.4	-3.8	-0.7	-4.4	2.8	-0.8	..
Bread, white loaf, sliced, supermarket sales	650 g(c)	Sep qtr 00	2.2	0.8	11.4	-3.8	-1.3	-0.8	-0.4	0.9	..
Beef, rump steak	1 kg	Sep qtr 00	-5.7	-2.1	11.4	-3.8	-2.4	-1.5	-5.5	-1.2	..
Chicken, frozen	1 kg	Sep qtr 00	-1.3	-6.4	11.4	-3.8	-0.8	-14.9	8.7	-4.2	..
Potatoes	1 kg	Sep qtr 00	3.8	-0.7	11.4	-3.8	-5.6	1.0	—	-0.8	..
Coffee, instant (jar)	150 g	Sep qtr 00	12.4	1.3	11.4	-3.8	-4.7	0.6	-13.0	0.3	..
Scotch nip, public bar	30 ml	Sep qtr 00	7.2	7.6	11.4	-3.8	4.6	7.6	5.1	9.2	..
Private motoring petrol											
Leaded	1 litre	Sep qtr 00	8.1	12.2	11.4	-3.8	11.6	9.1	8.5	8.7	..
Unleaded	1 litre	Sep qtr 00	8.4	12.2	11.4	-3.8	11.8	9.1	8.6	8.9	..

(a) Experimental series. Users are cautioned these estimates are derived indirectly by calculating a deflator from the expenditure components of the state series concerned. Therefore, in general, the sum of the state estimates does not equal the estimates for Australia. Reference year for chain volume measures is 1998-99.

(b) Base year: 1989-90 = 100.0. The 14th Series Australian Consumer Price Index was introduced September quarter 2000. Some changes include an updated commodity classification and weighting pattern and changes in composition of some groups. For more details of changes, refer to Information Paper: Introduction of the 14th Series Australian Consumer Price Index (Cat. no. 6456.0) released 29 September 2000.

(c) 680g in Hobart and Darwin.

INDEX OF FEATURE ARTICLES PUBLISHED IN ACT BUSINESS INDICATORS

<i>Issue</i>	<i>Title</i>	<i>Page reference</i>
Jan 2001	Child care in the ACT, June 1999	7
Dec 2000	Cafes and Restaurants Industry in the ACT	6
Dec 2000	Legal Services Industry in the ACT	8
Nov 2000	Manufacturing Industry in the ACT	6
Oct 2000	Computing Services Industry 1998–99	6
Sep 2000	Motor Vehicle Use in the ACT	6
Aug 2000	Household Expenditure on Goods and Services in the ACT	6
Jul 2000	Small Business in the ACT	6
Jun 2000	Sports Attendance	7
	Attendance at Selected Cultural Venues	8
May 2000	Employee Earnings, Benefits and Trade Union Membership	7
Apr 2000	Emergency Services and Public Transport Usage in the ACT	8
Mar 2000	Forms of Employment	6
Feb 2000	Job Search Experience of Unemployed Persons	6
Jan 2000	Transition from Education to Work, May 1999	6
Dec 1999	Structure of the ACT Economy	6
	Participation in Sport and Physical Activities	7
Nov 1999	Crime and Safety in the ACT	6
Oct 1999	Labour Force Experience in the ACT	6
Sep 1999	Career Experience in the ACT	7
	Carers in the ACT	9
Aug 1999	Stock of Human Resources in Science and Technology	6
Jul 1999	Persons with a Disability in the ACT	6
Jun 1999	Participation in Education in the ACT	6
May 1999	Transition from Education to Work of Persons Aged 15–64 in the ACT	7
Apr 1999	Persons Not in the Labour Force in the ACT	6
Mar 1999	Education and Labour Force Status of the ACT's Young People	6
Feb 1999	Income and Living Standards in the ACT	6
Jan 1999	Education and Training Experience of ACT Residents	6
Dec 1998	Families and Labour Force Status in the ACT	6
Nov 1998	Retrenchment and Redundancy in the ACT	6
	Retail Turnover in the ACT	9
Oct 1998	Research and Experimental Development in the ACT	6
Sep 1998	Labour Force Mobility in the ACT	6
	Income Distribution in the ACT	8
Aug 1998	ACT Investors in Rental Dwellings	6
Jul 1998	Retirement and Retirement Intentions	6
Jun 1998	Profile of Small Business in the ACT	7
May 1998	Participation in Education in the ACT	7
Apr 1998	Retail Turnover in the ACT by Type of Retailing and Shopping Centre	7
	Shopping Preferences in the ACT	7
Mar 1998	Characteristics of Small Business	8
Feb 1998	Weekly Earnings of Employees in the ACT	8

FOR MORE INFORMATION...

- INTERNET** www.abs.gov.au the ABS web site is the best place to start for access to summary data from our latest publications, information about the ABS, advice about upcoming releases, our catalogue, and Australia Now—a statistical profile.
- LIBRARY** A range of ABS publications is available from public and tertiary libraries Australia-wide. Contact your nearest library to determine whether it has the ABS statistics you require, or visit our web site for a list of libraries.
- CPI INFOLINE** For current and historical Consumer Price Index data, call 1902 981 074 (call cost 77c per minute).
- DIAL-A-STATISTIC** For the latest figures for National Accounts, Balance of Payments, Labour Force, Average Weekly Earnings, Estimated Resident Population and the Consumer Price Index call 1900 986 400 (call cost 77c per minute).

INFORMATION SERVICE

Data which have been published and can be provided within five minutes are free of charge. Our information consultants can also help you to access the full range of ABS information—ABS user-pays services can be tailored to your needs, time frame and budget. Publications may be purchased. Specialists are on hand to help you with analytical or methodological advice.

- PHONE** **1300 135 070**
- EMAIL** **client.services@abs.gov.au**
- FAX** 1300 135 211
- POST** Client Services, ABS, GPO Box 796, Sydney 1041

WHY NOT SUBSCRIBE?

ABS subscription services provide regular, convenient and prompt deliveries of ABS publications and products as they are released. Email delivery of monthly and quarterly publications is available.

- PHONE** 1300 366 323
- EMAIL** subscriptions@abs.gov.au
- FAX** 03 9615 7848
- POST** Subscription Services, ABS, GPO Box 2796Y, Melbourne 3001



2130380001019

ISSN 1320-808X

RRP \$17.50